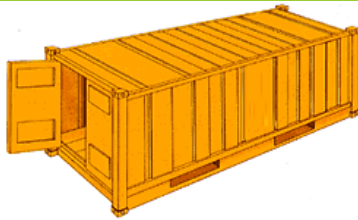


Container Specifications

Container sizes can vary slightly. The following measures are provided as an indication only. Maximum cargo is also subject to the road's weight limitation, depending on the countries and states where the loaded containers are travelling through. In most cases, the maximum possible cargo will be lower than the maximum payload shown.

DRY CARGO CONTAINER



DIMENSIONS

Type	Interior Measurements			Door Open		Load Capacity		
	Length	Width	Height	Width	Height	Capacity	Tare	Maxi Cargo
Standard 20	5.900 m 19' 4"	2.350 m 7' 8"	2.393 m 7' 10"	2.343 m 7' 8"	2.280 m 7' 6"	33.20 m ³ 1,172 Cft	2,230 kg 4,916 Lbs	21,770 kg 147,900 Lbs
Standard 40	12.036 m 39' 5"	2.350 m 7' 8"	2.392 m 7' 10"	2.343 m 7' 8"	2.280 m 7' 6"	67.74 m ³ 2,390 Cft	3,700 kg 8,160 Lbs	26,780 kg 59,040 Lbs

Manufactured from either Aluminium or steel, standard dry cargo containers are suitable for most types of cargo. Aluminium containers have a slightly larger payload than steel, and steel containers have a slightly larger internal cube.

REFRIGERATED CONTAINER



DIMENSIONS

Type	Interior Measurements			Door Open		Load Capacity		
	Length	Width	Height	Width	Height	Capacity	Tare	Maxi Cargo
Refeer 20	5.425 m 17' 8"	2.275 m 7' 5"	2.260 m 7' 5"	2.258 m 7' 5"	2.216 m 7' 3"	28.3 m ³ 1,000 Cft	3,200 Kg 7,040 Lbs	20,800 Kg 45,760 Lbs
Refeer 40	11.493 m 37' 8"	2.270 m 7' 5"	2.197 m 7' 2"	2.282 m 7' 5"	2.155 m 7' 0"	57.8 m ³ 2,040 Cft	4,900 Kg 10,780 Lbs	25,580 Kg 56,276 Lbs

Recommended for delicate cargo. Bottom-air delivery system ensures refrigerated cargo reaches its destination in optimum condition.

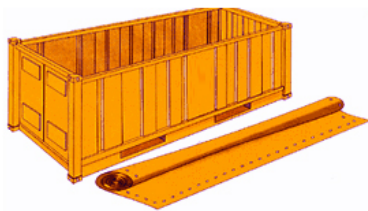
UPGRADED CONTAINER



DIMENSIONS

Type	Interior Measurements			Door Open		Load Capacity		
	Length	Width	Height	Width	Height	Capacity	Tare	Maxi Cargo
Upgraded 20	5.900 m 19' 4"	2.311 m 7' 7"	2.390 m 7' 10"	2.286 m 7' 6"	2.280 m 7' 6"	32.63 m ³ 1,150 Cft	2,300 Kg 5,060 Lbs	28,180 Kg 61,996 Lbs
High Cube 40	12.036 m 39' 5"	2.350 m 7' 8"	2.697 m 8' 10"	2.338 m 7' 8"	2.585 m 8' 5"	76.3 m ³ 2,694 Cft	3,970 Kg 8,750 Lbs	26,510 Kg 58,450 Lbs
Refeer 40 High Cube (Refrigerated)	11,557 m 37' 11"	2.294 m 7' 6"	2.500 m 8' 2"	2.294 m 7' 6"	2.440 m 8' 0"	66.6 m ³ 2,344 Cft	4,500 Kg 9,900 Lbs	25,980 Kg 57,561 Lbs

OPEN TOP CONTAINER



DIMENSIONS

Type	Interior Measurements			Door Open		Load Capacity		
	Length	Width	Height	Width	Height	Capacity	Tare	Maxi Cargo
Open Top 20'	5.894 m 19' 4"	2.311 m 7' 7"	2.354 m 7' 8"	2.286 m 7' 6"	2.184 m 7' 2"	32.23 m ³ 1,136 Cft	2,400 Kg 5,280 Lbs	21,600 Kg 47,620 Lbs
Open Top 40'	12.028 m 39' 5"	2.350 m 7' 8"	2.345 m 7' 8"	2.341 m 7' 8"	2.274 m 7' 5"	66.5 m ³ 2,350 Cft	3,850 Kg 8,490 Lbs	26,630 Kg 58,710 Lbs

Allowing cargo to be loaded from the top, open top containers are particularly suitable for bulky cargo such as machinery. They are fitted with a PVC tarpaulin cover and attachable bows with cable sealing devices. The container doors can be removed to make the stuffing of cargo more convenient. Manufactured from steel

Container Specifications

FLAT RACK CONTAINER

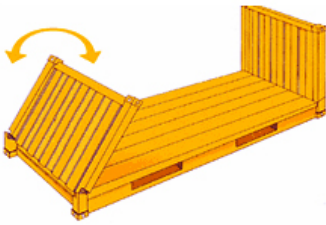


DIMENSIONS

Type	Interior Measurements			Door Open		Load Capacity		
	Length	Width	Height	Width	Height	Capacity	Tare	Maxi Cargo
Flat Rack 20'	5.61 m 18' 5"	2.228 m 7' 3"	2.233 m 7' 4"	-	-	-	2,530 Kg 5,280 Lbs	27,722 Kg 61,117 Lbs
Flat Rack 40'	12.06 m 39' 7"	2.228 m 7' 3"	2.233 m 7' 4"	-	-	-	5,479 Kg 12,081 Lbs	38,918 Kg 85,800 Lbs

Flatracks are especially suited to heavy loads or cargo that needs loading from the top or sides, such as pipes and machinery. There are collapsible and non-collapsible containers with or without walls. Manufactured from steel.

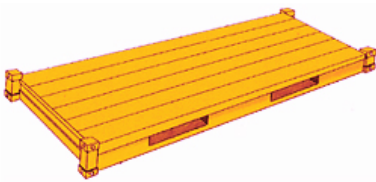
FLAT RACK COLLAPSIBLE



DIMENSIONS

Type	Interior Measurements			Door Open		Load Capacity		
	Length	Width	Height	Width	Height	Capacity	Tare	Maxi Cargo
Standard 20	5.63 m 18' 6"	2.228 m 7' 3"	2.233 m 7' 4"	-	-	-	2,749 Kg 6,061 Lbs	27,722 Kg 61,117 Lbs
Standard 40	12.06 m 39' 7"	2.228 m 7' 3"	2.233 m 7' 4"	-	-	-	5,800 Kg 12,787 Lbs	38,918 Kg 85,800 Lbs

PLATFORM



DIMENSIONS

Type	Interior Measurements			Door Open		Load Capacity		
	Length	Width	Height	Width	Height	Capacity	Tare	Maxi Cargo
Platform 20'	6.07 m 19' 11"	2.43 m 8' 0"	2.23 m 7' 4"	-	-	-	2,749 Kg 6,061 Lbs	23,993 Kg 52,896 Lbs
Platform 40'	12.19 m 40' 0"	2.43 m 8' 0"	1.95 m 6' 5"	-	-	-	5,798 Kg 12,783 Lbs	30,117 Kg 66,397 Lbs